

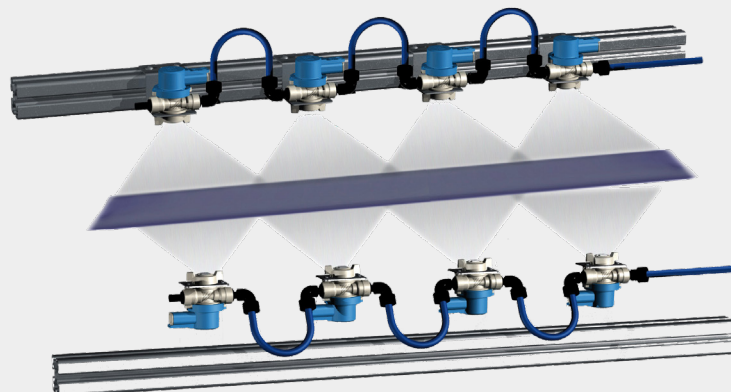
# spray.xact

Spray lubrication



# spray.xact

- Spraying system with a low level of mist
- No extraction / increased health protection
- Precise dosing



- › spray.xact b: The perfect solution for oiling blanks or coils. The spraying nozzles are mounted on a profile. Every nozzle can be adjusted individually to match the requirements of the surface that is to be sprayed.

## A new generation for the precise and sparing application of oil without unwanted spray mist

spray.xact is a highly flexible solution for the contact-free and precise application of oils and aqueous solutions. The spray jet is produced by way of a valve that pulsates at a high frequency and that is equipped with a single-substance nozzle. As a result, the expensive use of compressed air for the nozzles, which leads to the formation of spray mist in conventional systems, is no longer required.

spray.xact is particularly suitable for stamping and forming applications fineblanking or rolling mills.

### Advantage 1: no formation of mist

- Reduced plant contamination
- Less contamination of the ambient air
- No need for an extraction system
- Reduced health risk for the operator

The individual valves can be controlled separately and adapt themselves automatically to the feed rate. Parameters can be adjusted and the oil quantity can be changed in a user-friendly manner – even during a running process.

### Advantage 2: Precision means savings

- Lubrication with minimum quantities due to very precise and fine metering
- Different levels of spray intensity from each nozzle, if necessary
- Easy activation and deactivation of individual valves
- Spraying of patterns

- Simplification of subsequent processes, e. g. cleaning of parts
- Elimination of setup times

All of the valves of a spray.xact spray bar are supplied via a joint supply line and connected in series by way of hoses. There are no confusing, bulky hose and cable packages

### Advantage 3: compact design

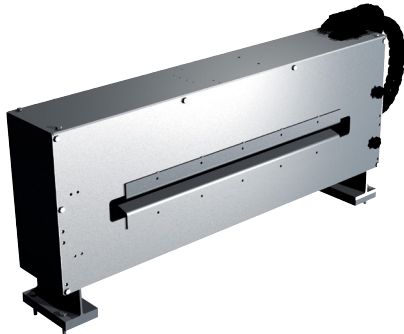
- Reduced hose-laying and cabling work, regardless of the number of nozzles
- Clear arrangement of components
- Tool-free nozzle change during maintenance
- Wear resistant and low maintenance

The spray.xact system can be easily integrated into the machine by way of rotary encoders, machine signals, or separate sensors. In addition, several different types of bus systems, e. g. Profibus, can be integrated.

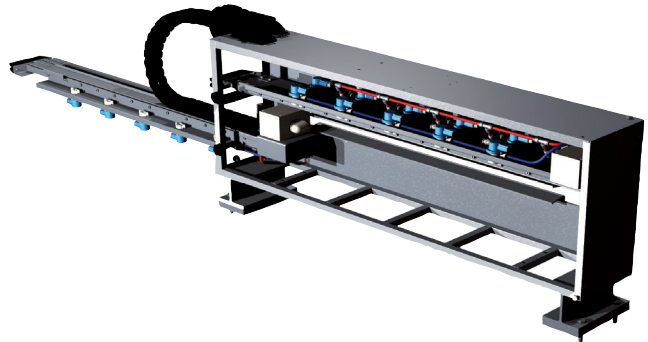
### Advantage 4: reliable flexibility

- Integration into the control system of the machine or use of an autonomous sensor system
- Error signals and error logs

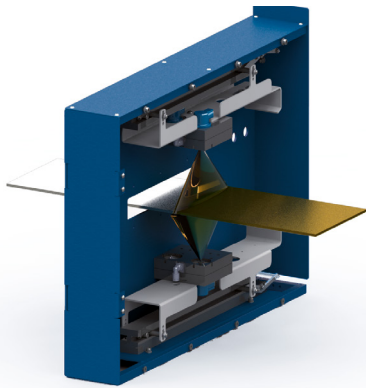
## Compact design Low-maintenance, user-friendly system Process and production reliability



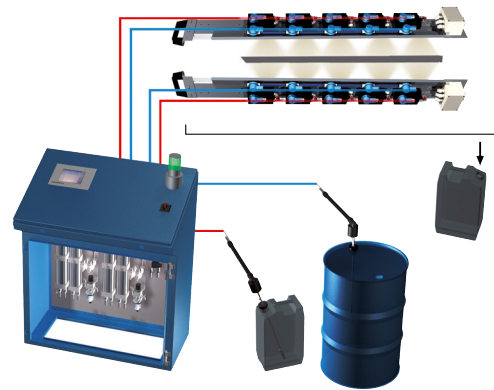
› spray.xact c: A compact solution for oiling on both sides.



› spray.xact c: The spraying nozzles are installed on a telescopic spray bar with a cable and hose carrier in a housing.



› In the case of smaller systems, the spray bars can be removed for maintenance purposes.

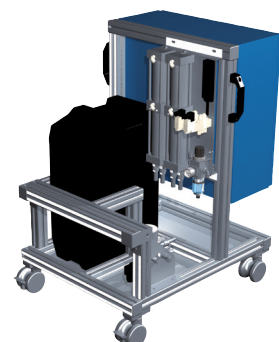


### Spray.xact fs mobile unit concept for flexible use

spray.xact fs mobile is a compact solution including a control system, supply system, and spraying unit. The system can be positioned quickly and in a space-saving manner wherever it is needed. The media supply is ensured by way of dosing piston pumps or, alternatively, via pressure vessel. The control system with a display unit is integrated in the system.

### Example of a system with two media:

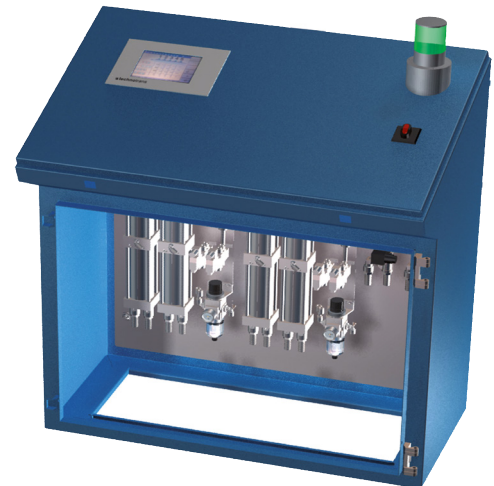
- Spray.xact control panel with a colour touch display and a signal lamp
- Media supply via pump modules
- Free return flow
- Connection of medium 1 + 2 in a barrel via a suction lance with an empty indication and filter
- Double spray bars for oiling from above and from below







- › Left picture: computerdisplay
- › Right picture: control panel



### Safe the operate and easy to understand

The spray.xact spraying units are supplied and controlled via the spray.xact fs. The system has a space-saving and ergonomic design as a cabinet or console supply unit with control panel. All of the components are easily accessible and easy to handle.

#### High-end supply unit

- Dosing piston pumps with suction lances for the supply from cans or other containers
- Empty indication
- Nozzle monitoring optional

#### Control unit

- Operation via a colour touch display with 5 m connecting cable for remote control
- Output of error signals and error logs
- Integration of different types of bus systems, e. g. CANopen, Ethernet, Profibus, EtherCAT, RS 485, Arcnet, etc.
- 250 spray programs can be saved

## spray.xact

### Advantages at a glance:

- Spraying system with a low level of mist
- Extraction is not required
- Reduced contamination
- Increased health protection
- Precise dosing
- Compact design
- Low-maintenance, user-friendly system
- Process and production reliability