

ink.supply

Central ink supply system for
newspaper printing



ink.supply

Advantages at a glance:

- always a step ahead in efficiency
- solutions made to measure
- turnkey solutions

Central ink supply system for newspaper printing

Printing presses are getting more and more efficient, and ink consumption is increasing. Central systems that supply sufficient ink to all printing units represent a crucial link in the printing process chain. technotrans is among the world leaders with more than 30 years of experience in the development and construction of central ink supply systems for offset printing presses. You too can benefit from our innovative, proven concepts.

Ink supply with logic

Customer-specific solutions – from the ink room to ink duct filling at the press – are the norm for modular ink supply systems.

In close co-operation with you, the client, systems are individually planned and delivered as turnkey facilities. Over 40,000 ink ducts of varying levels of automation have already been supplied worldwide. The unit components are complemented by an intelligent data network.

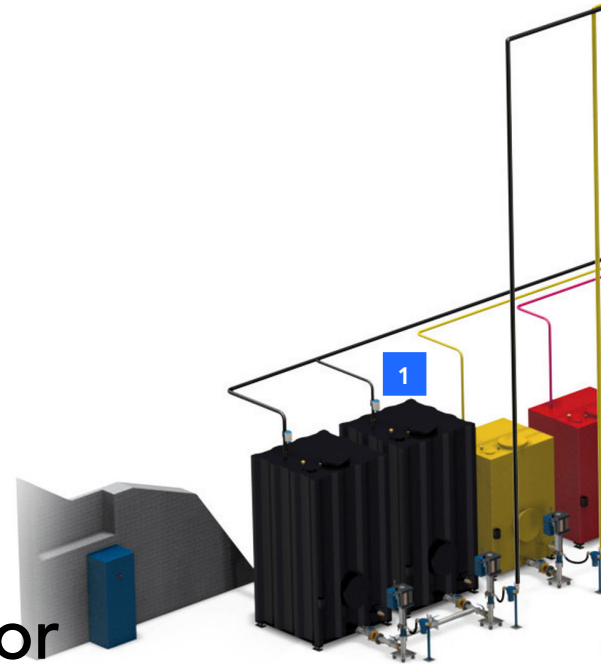
This network is used to check the ink tank filling levels, evaluate the ink consumption data of the individual presses or handle the ink ordering and logistics using interfaces to ink manufacturers.

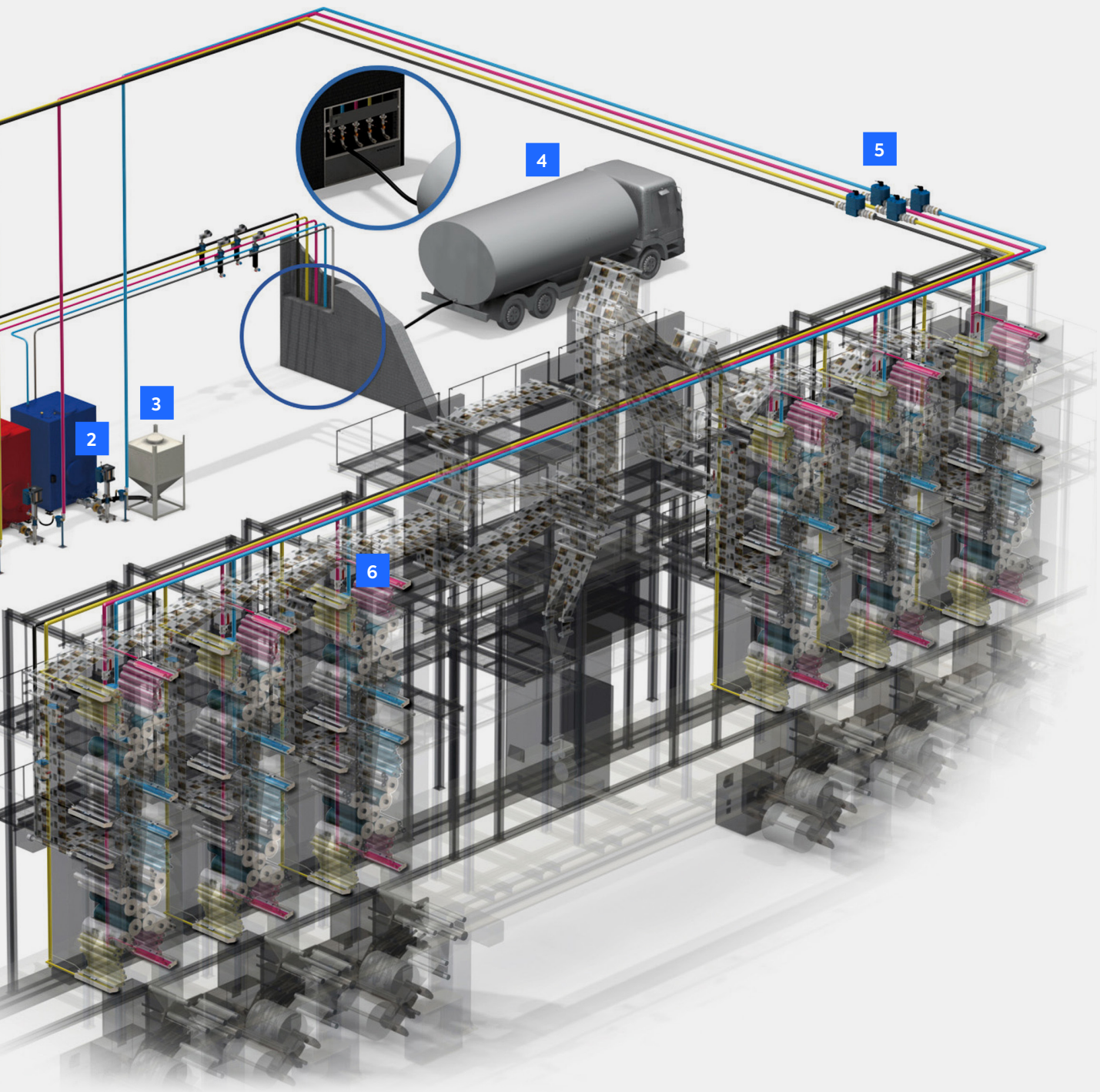
Central ink supply systems consist of components that are matched to each other and create a network that assures an optimum ink supply:

- the ink room with a large-scale tank system or a mobile container station and the accompanying high performance pumps
- the high-pressure pipework system with ink filters and consumption meter
- the ink levelling and control system for ink duct filling
- the data network, including control station link

All technotrans ink supply systems are based on the same principle: Reliability! Reliability! And a little extra reliability! Satisfied customers are our best reference.

Our many years of experience have taught us how important process stability and operating reliability are. We ensure this with elaborate concepts, powerful detailed features and durable components.





- 1 | tank system
- 2 | pump station
- 3 | test container
- 4 | tanker truck docking station
- 5 | consumption metering calcu.ink
- 6 | ink duct filling auto.fill

ink.supply

Advantages at a glance:

- Ink in motion
- operation parameters at the push of a button
- always the right level



› technotrans central ink supply with large-scale tanks up to 30,000 kg

Stationary tanks and ink containers

Depending upon ink consumption and the space available, large-scale tanks with a capacity of up to 30,000 kg or a stationary/mobile container system are used.

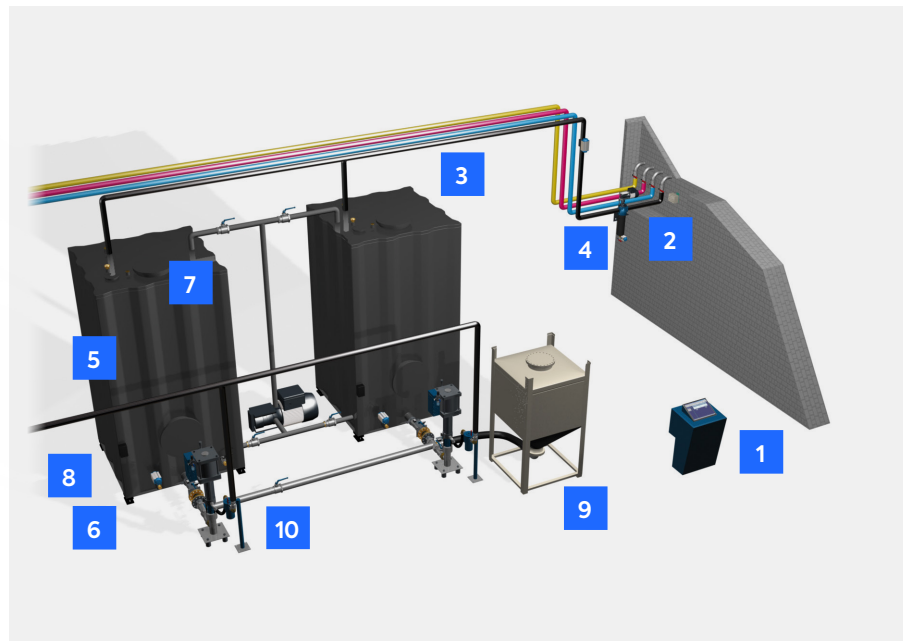
The standard arrangement is rectangular steel tanks with a sloping discharge base, or alternatively cylindrical tanks.

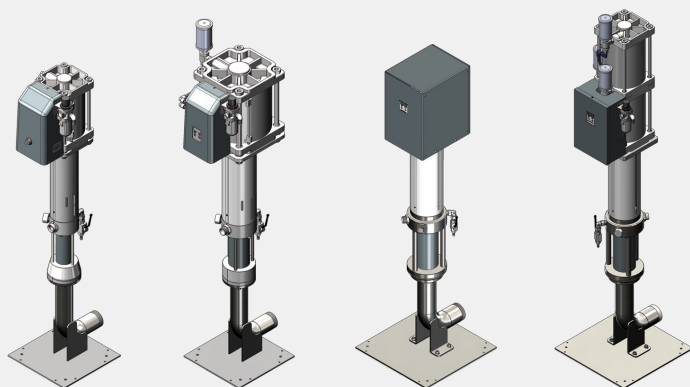
The connections required for filling the tanks from the ink factory's tanker truck are located at the docking station. Filling level probes, displays and other safety elements prevent the possibility of overfilling.

Tank systems from technotrans offer a wide variety of configuration options:

The tank system is controlled from a control cabinet with convenient colour display. Further PCs within the printing company network as well as a remote maintenance module can easily be connected.

- 1 | central control with touch screen
- 2 | display and clearing panel at the docking station
- 3 | filling line with integrated ball valves
- 4 | edge filters
- 5 | tank with inspection aperture and manhole
- 6 | filling level monitoring via weighing cell pressure sensor or ultrasonic sensor
- 7 | supplementary probe in compliance with German Federal Water Act
- 8 | emergency discharge connection
- 9 | test container connector
- 10 | high-pressure pumps with crossconnection and ink filter





The range of pumps

Both ink pumps developed special for offset printing are ultra-durable pneumatic or hydraulic high-pressure reciprocating pumps. A complete range of pumps is available, from the small Hobcock pump to the large container pump with an extra-high pump capacity. All versions are notable for their ease of operation and maintenance.

› pump range for newspaper

calcu.ink consumption metering

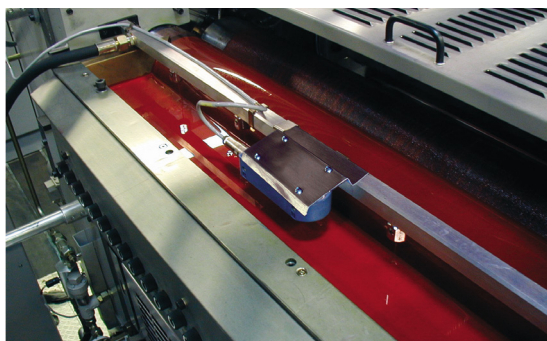
The calcu.ink flow metering system makes it possible to measure the ink consumption per press, for each order or as a monthly or annual figure. A flow-rate measuring head is installed in the pipework to this end. The ink consumption data is passed on to the display module at the press control station or fed directly into the customer's own computer network. All important operation parameters at a glance.

Seite 2050		Farbverbrauchsmengenmessung		13.41:53	
Gesamt		Maschine 1	Maschine 2	Maschine 3	Maschine 4
Auftrag		2015.06.24 15:36		Auftrag 1234	
Freipar.		Typ 1		Typ 2	
Total		Farbe 1	10324,5 kg	00,0 kg	
Charge		Farbe 2	935,7 kg	00,0 kg	
		Farbe 3	00,0 kg	784,4 kg	
		Farbe 4	00,0 kg	822,3 kg	
		Farbe 5	00,0 kg	00,0 kg	

› ink consumption measurement calcu.ink

Auto.fill levelling and control system

technotrans is the world market leader for ink duct filling, with many thousands of installed systems. A wide variety of systems with a wide range of automation levels are available. The auto.fill is particularly suitable for newspaper web offset. This product is notable for its compact dimensions and high reliability, irrespective of whether it has non-split, split or quartered ink ducts.



› ink level regulation auto.fill

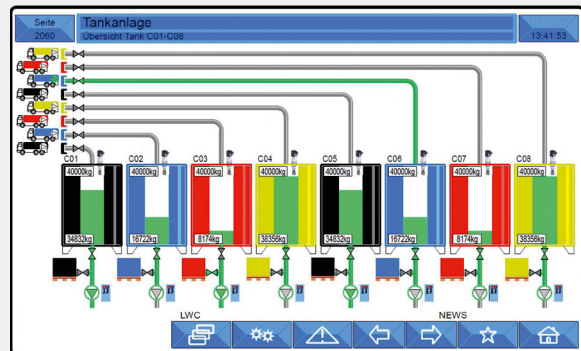
An ultrasonic sensor monitors the ink level in the ink duct. If the ink level falls below the specified target level, the ink valve is opened until the ink reaches it again. This automatic supply principle thus maintains a constant ink level.

Ease of operation and operating reliability are boosted by:

- ultrasonic double transformer sensor with integral inclination switch and LED displays
- manual/auto switch for changeover to manual operation
- ink valve shuts off automatically in the event of low compressed-air pressure, including emergency manual operation

A central control and display unit ensures that all the necessary information is available and provides an unmistakable alarm if there is a risk of the ink duct overflowing or running empty.

Seite 2060		Farbverbrauchsmengenmessung												13:41:53	
		Datenlogger Maschine 1													
Gesamt		Maschine 1		Maschine 2		Maschine 3		Maschine 4		Maschine 5		Maschine 6		Maschine 7	
Auftrag		Datum	Zeit	Auftrag	Farbe	1/1	2/1	3/1	4/1	5/1	1/2	2/2	3/2	4/2	5/2
Freipar.		2015.06.24	13:56:41	1234	1324,5	/ 00,0	/ 935,7	/ 00,0	/ 00,0	/ 00,0	/ 784,4	/ 00,0	/ 822,3		
Total		2015.06.24	13:56:41	1236	1324,5	/ 00,0	/ 935,7	/ 00,0	/ 00,0	/ 00,0	/ 784,4	/ 00,0	/ 822,3		
Charge		2015.06.24	13:56:41	1237	1324,5	/ 00,0	/ 935,7	/ 00,0	/ 00,0	/ 00,0	/ 784,4	/ 00,0	/ 822,3		
Zeitintervall															
Löschen															



› left image: operating data evaluation
› right image: level indicator

Display and control uni.control

Depending on the complexity of the installation displays with different sizes can be used as color touch-screen.

Operating data evaluation

The ink consumption rates of all connected presses and the ink levels in the tanks and stationary containers can be displayed using uni.control. The data required is collected or made available to users via the internal network. Therefore further information and statistics can be applied individually

Online connection of the paint factories

Why not simply leave the task of managing your deliveries of ink up to your ink supplier? Sophisticated IT-solutions allow you to authorise your ink suppliers to access the ink levels via Internet and automatically trigger a delivery for you.

Benefit from our experience and expertise in the development and installation of central ink supply systems.

Whether for sheetfed offset, coldset or heatset printing, technotrans offers a unique range of coordinated products and therefore a solution for every application. We will gladly provide further advice and an on site consultation.

technotrans and newspaper printing

As a system supplier, the product range of technotrans in newspaper printing also includes dampening solution systems, filtration solutions and spray dampening systems. We will gladly provide further advice and an on site consultation.

ink.supply

Advantages at a glance:

- tank system offer a variety of product configurations
- ink manufactures can be connected via interface
- especially durable, pneumatic and hydraulically driven high-pressure piston pumps
- detecting the consumption data per machine
- a wide variety of systems with a wide range of automation levels are available
- state of the art control system